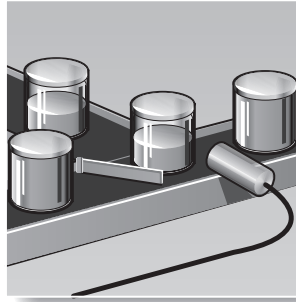
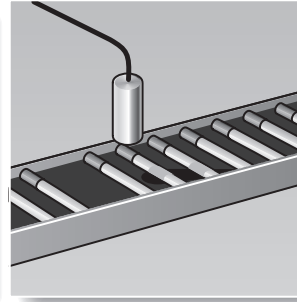


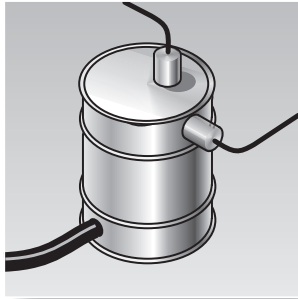
Inspect for package contents.



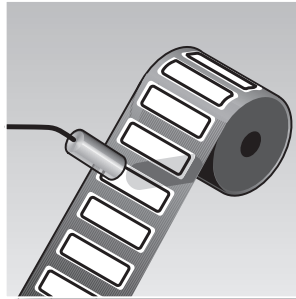
Confirmation of liquid level.



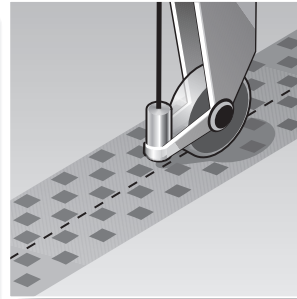
Checking for filter & tobacco presence in cigarettes.



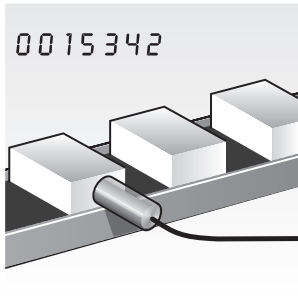
Level control in non-metallic containers.



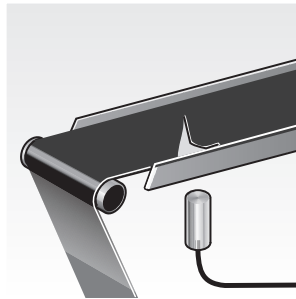
Check for missing label on backing material. *



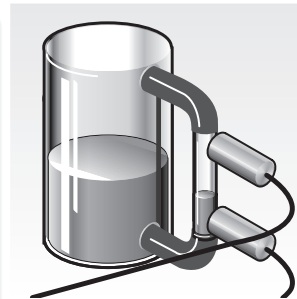
Following a metal thread in textiles.



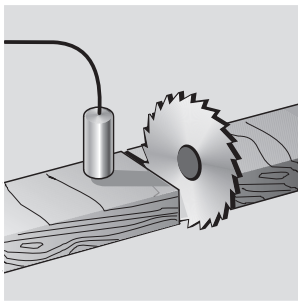
Detecting, counting objects.



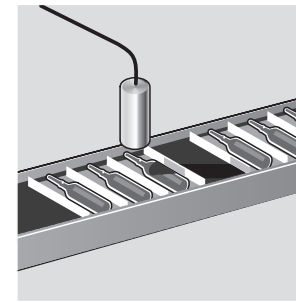
Inspecting paper or plastic strips. *



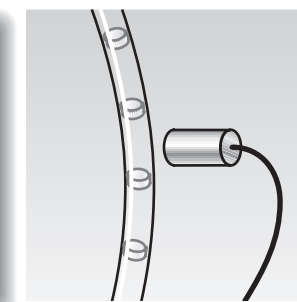
Level control or monitoring via sight glass.



Sensing presence & thickness of lumber.



Packaging-confirmation of product presence. *



Detecting / counting small plastic or metal parts moving through tubing.

* Be sure no metal is behind target object.