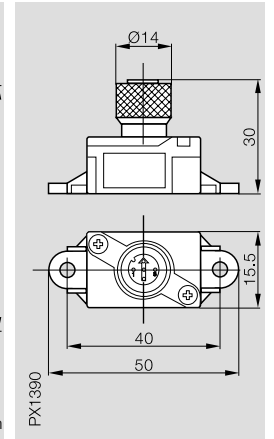
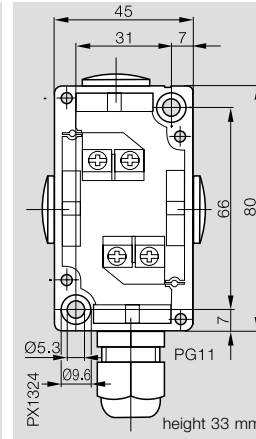
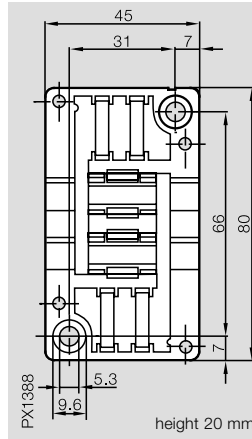
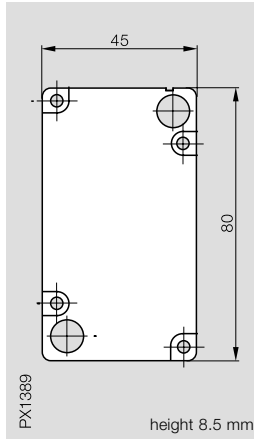
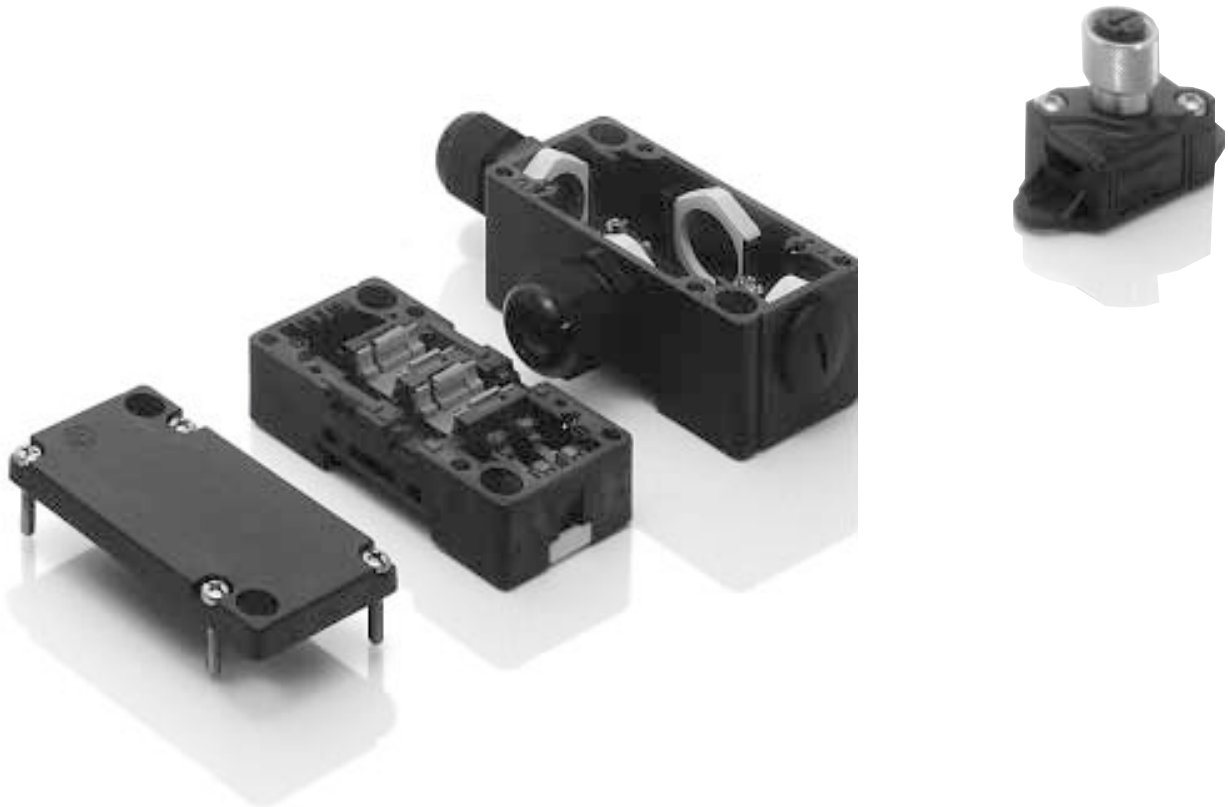


	Module Cover	Module Base	Module Base	Coupling
	for modules lower section as distributor	for ribbon cable screw or rail mounting DIN EN 50022-35 × 7.5	for round cable	with eyelets for AS-Interface®-ribbon cable/ M12 connector (S 4)

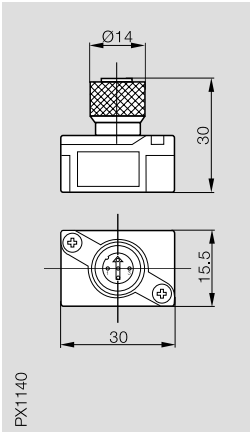


Ordering code	BAS ZS-ABDECKUNG	BAS S-S0A-ADT	BAS-S-H0A-RSK	BAS K-H0S-ADT-S 4
---------------	------------------	---------------	---------------	-------------------



Coupling

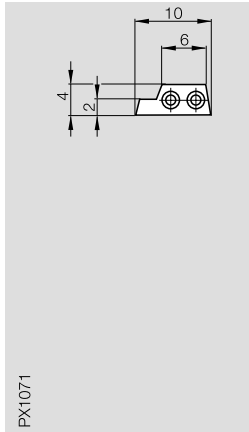
without eyelets for AS-Interface®-ribbon cable/
M12 connector (S 4)



BAS K-H00-ADT-S 4

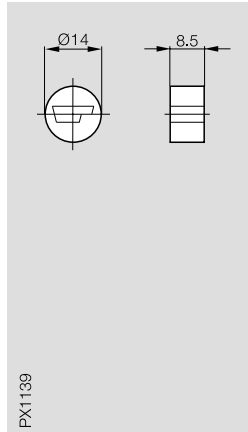
Ribbon Cable

cable length 100 m



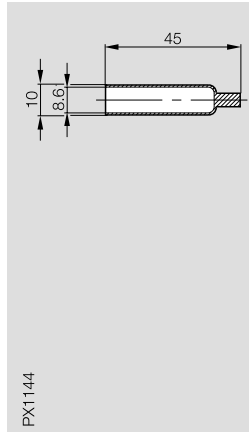
BAS KABEL 2x1,5 TR _100M

Ribbon Cable Seal



BAS ZS-DICHTUNG TRK PG11

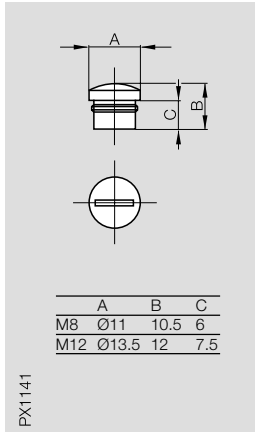
Ribbon Cable Cover Cap



BAS ZS-SCHUTZKAPPE

Cover Cap

for non-used openings
on modules



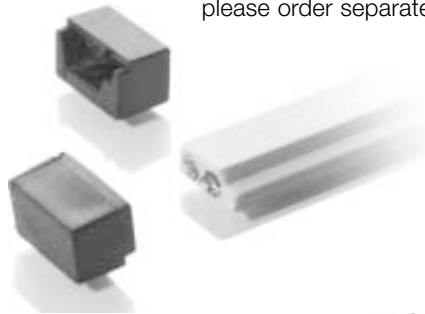
Verschlussstopfen M12/S 4
Verschlussstopfen M08/S49

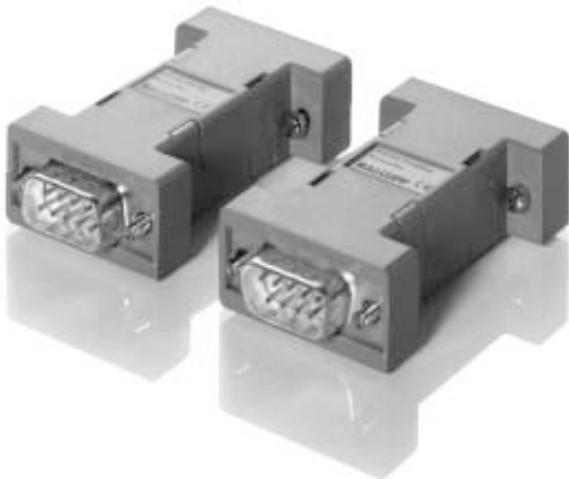


Please indicate color in ordering code!
BK = black
indicates external power supply for 24 V DC
YE = yellow
for the AS-Interface®



End cap
BAS ZS-Dichtkappe TRK
please order separately





Converter
BAS ZM-KONVERTER PROFIBUS
BAS ZM-Converter RS232C/RS485

Converts signals for the corresponding interfaces.

PROFIBUS-DP MASTERSIMULATOR

The PROFIBUS master simulator is a simple, universal program for exchanging data with PROFIBUS slaves of almost any manufacturer over PROFIBUS-DP.

The master simulator includes:

- Software
PROFIBUS-DP MASTERSIMULATOR
- PROFIBUS KONVERTER
- D-Sub data cable



AS-Interface®
Master Control Tools
BAS M-RLD/DOS

Ladder programming.

Windows Control Tools
BAS M-ACT/WIN

for visualizing and programming the master.

Windows Control Tools
BAS M-ACT/WIN-DIAGNOSE

for visualizing and programming the master as well as performing diagnostics.